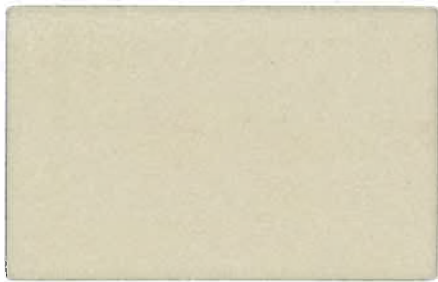


Faux Mo



Shell



Putty



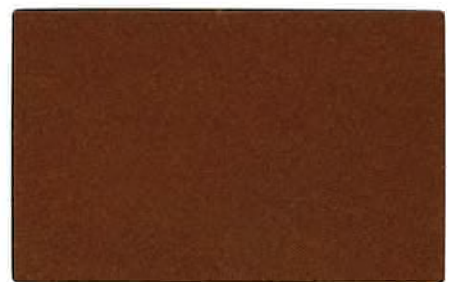
Stone



Wheat



Oat



Sienna



Ochre



Crimson



Persimmon



Poppy



Rust



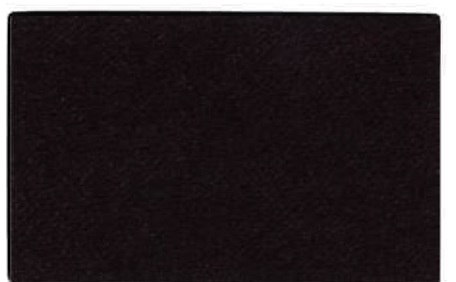
Merlot



Ruby



Bark



Shadow



Limon



Delta



Nickel



Spa



Sky



Path



Grass



Marine



Shale



Moss



Sapphire



Charcoal



Pine



Lapis



Black

Faux Mo

Application: Upholstery

Content: 58% Repreve® post-consumer recycled polyester, 42% polyester

Backing: Acrylic

Finish: Crypton Green®

Flame Resistance: CA 117 2013, NFPA 260 Class 1, With proper components, compatible with CA 133

Durability: 200,000 double rubs

Maintenance: WS - Water-based cleaning agents or foam

Bleach Cleanable: 10:1 solution

Width: 55"

Repeat: -

Shown Railroaded: No

Lightfastness: Class 4, 40 hours

Weight: 1.60 lbs.



©2017

Visit memosamples.com to view full pattern repeat and complete specs

Multiple factors affect fabric durability and appearance retention, including end-user application and proper maintenance.

Wyzenbeek results above 100,000 double rubs have not been shown to be an indicator of increased lifespan.

REDUCED ENVIRONMENTAL IMPACT:

- Recycled fiber content
- GREENGUARD certified
- Meets or exceeds ACT Sustainability Standard NSF/ANSI 336 compliance requirements

