

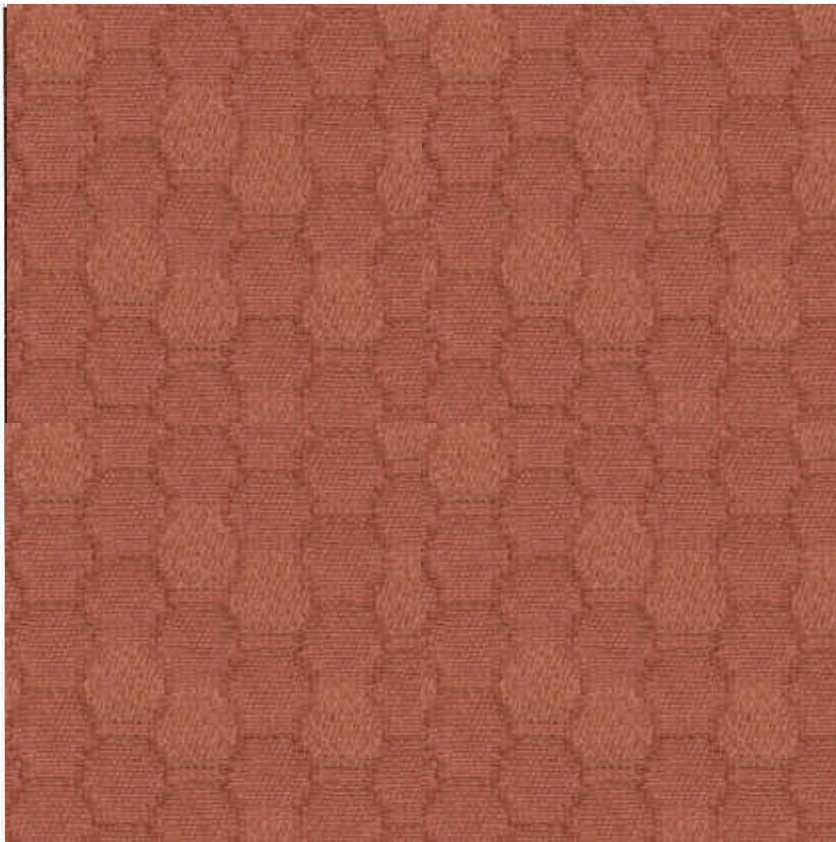
CLEAN IMPACT **TEXTILES**[®]

BIODEGRADABLE*

Upholstery

Emerge 2178

Bleach Cleanable



Clay
904



Citrine
902



Parchment
901



Smoke
912



Terra Rose
903



Cerise
905

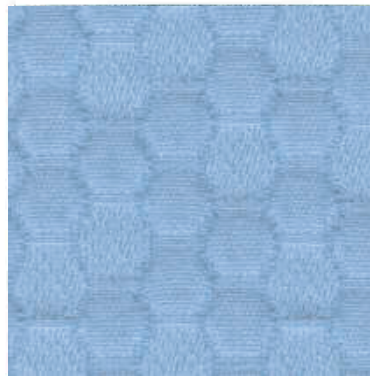
duvaltex

Emerge 2178

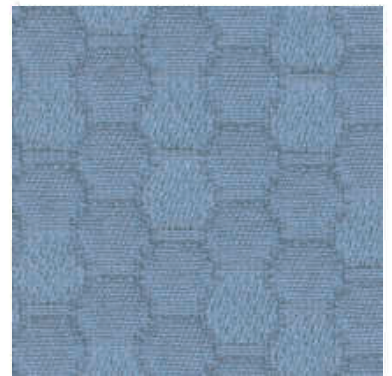
Bleach Cleanable



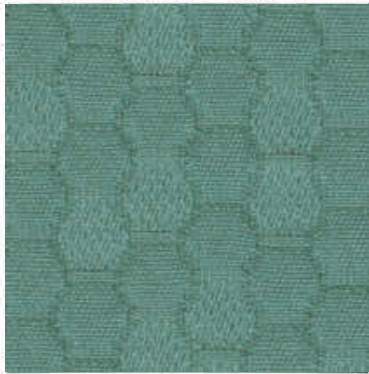
Cloud
911



Atmosphere
910



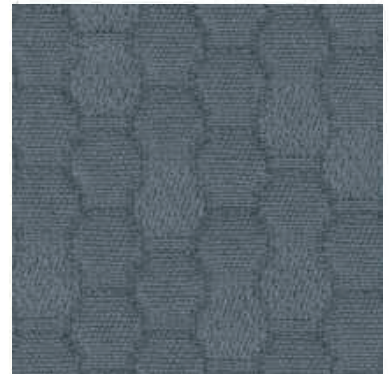
Featherstone
913



Aloe
908



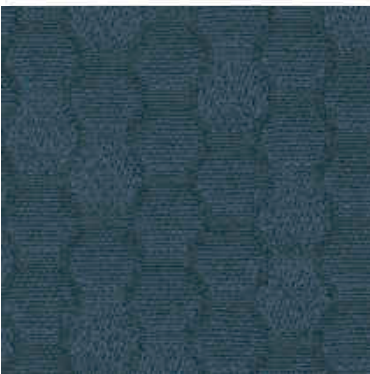
Cobalt
909



Graphite
914



Emerald
907



Squid Ink
906



Evening
915

Upholstery

CLEAN IMPACT **TEXTILES**

Emerge 2178

Bleach Cleanable

Specifications

Content	81% post-consumer recycled biodegradable* polyester 19% pre-consumer recycled biodegradable* polyester
Weight	12.4 ± 1.0 oz./lin. yd
Width	54" min. useable
Repeat	12" horizontal 18.25" vertical
Backing	none
Treatment	none

Cleaning Code

Standard Care Label W-S. Clean with water based cleaning agents, foam or pure, water free solvents. Vacuuming or light brushing is recommended to prevent dust and soil buildup.

Bleach Cleanable - May be cleaned with a 10% bleach-to-water solution. Rinse well after cleaning. May also be disinfected with hydrogen peroxide, alcohol, and quaternary ammonium (quat) based cleaners.

Miscellaneous

- Application testing of this product is recommended.
- Colors may vary between dye lots.
- This is a directional fabric.

Proudly woven in North America supporting our local communities.

Sustainability

BIODEGRADABLE* CLEAN IMPACT TEXTILES® address the daunting problem of how to deal with polyester fabric at the end of its useful life.

Biodegradable* in landfill after 1,278 days (tested under ASTM D5511)


*Rate and extent of biodegradation into elements found in nature is 91% after 1,278 days under ASTM D5511 (Anaerobic Biodegradation of Plastic Materials Under High Solids Anaerobic Digestion Conditions). The test was done with the same component (PET) polyester and biocatalyst additive. No evidence of further degradation.




Guilford of Maine


A duvallex brand

Performance

 **Colorfastness to light (AATCC 16.3 Option 3)**
Grade 4.5 min. at 40 hours

 **Colorfastness to crocking (AATCC 8)**
Grade 4 min. dry & Grade 4 min. wet

Breaking Strength (ASTM D5034)
265 lbf min. warp and 286 lbf min. fill

 **Seam Slippage (ASTM D4034)**
108 lbf min. warp and 106 lbf min. fill

Pilling Resistance (ASTM D3511)
Class 4 min.

 **Flammability**
CA Technical Bulletin 117-2013 Section 1
NFPA 260-2013 Class I

 **A* Abrasion (ASTM D4157)**
100,000 double rubs min. cotton duck

*Multiple factors affect fabric durability and appearance retention, including end-user application and proper maintenance. Wyzenbeek results above 100,000 double rubs have not been shown to be an indicator of increased lifespan.

Certification Marks owned by the Association for Contract Textiles, Inc.

USA & INTERNATIONAL

Tel 800-544-0200

Fax 616-554-2255

CANADA

Tel 418 227-9897

Fax 418 227-9899

For samples, visit guilfordofmaine.com