



MOMENTUM
TEXTILES & WALLCOVERING

Deka



Bisque



Hemp



Pumice



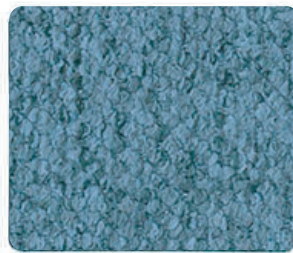
Desert



Gilded



Sage



Refresh



Moon



Copper



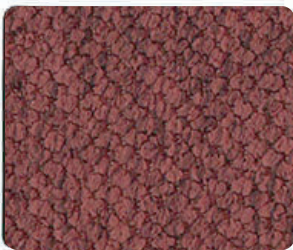
Peridot



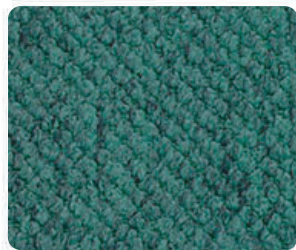
Rain



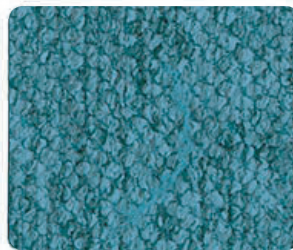
Mercury



Garnet



Emerald



Caribe



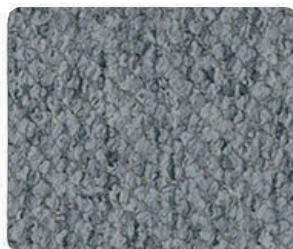
Nordic



Violet



Driftwood



Pewter



Charcoal

Deka

- Application:** Upholstery, Panel
 - Content:** 63% Post Consumer Recycled Polyester, 37% Polyester
 - Backing:** Acrylic
 - Finish:** PFAS-Free Stain Resistant
 - Flame Resistance:** CA 117 2013, UFAC Class 1, NFPA 260 Class 1; With proper components, compatible with CA 133; ASTM E84
 - Durability:** 200,000 double rubs*
 - Maintenance:** WS - Water-based cleaning agents or foam
 - Width:** 56"
 - Repeat:** -
 - Shown Railroaded:** No
 - Lightfastness:** Class 4, 40 hours
 - Weight:** 0.88 lbs.
- 🔥 A 🌞 🍷 ✨
- ©2022
- Visit momentumtextilesandwalls.com to view full pattern repeat and complete specs

Multiple factors affect fabric durability and appearance retention, including end-user application and proper maintenance.

*Abrasion test results exceeding ACT Performance Guidelines are not an indicator of product lifespan.

REDUCED ENVIRONMENTAL IMPACT:

- GREENGUARD certified
- Meets or exceeds ACT Sustainability Standard NSF/ANSI 336 compliance requirements
- Recycled fiber content

