

Brisa — Ultrafabrics



Acoustical properties • Breathable technology



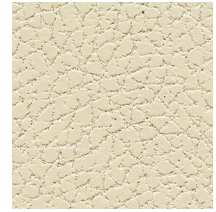
533-3775 Mystic Beige



533-3775 Mystic Beige



533-3019 Birch



533-3863 Cream



533-3822 Bone



533-3946 New Sand



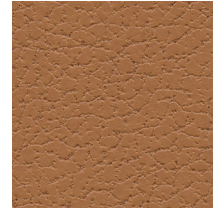
533-3051 Ginger



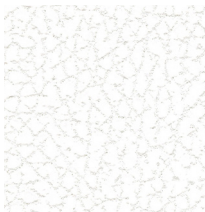
533-3276 Wishbone



533-3915 Putty



533-3823 Aztec



533-5747 White



533-3277 Moon



533-5820 Quicksilver



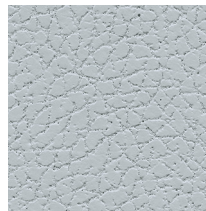
533-3914 Bark



533-3591 Caramel



533-5703 Wrought Iron



533-6528 Clear Quartz



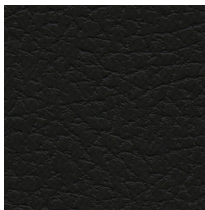
533-5802 Ash



533-3022 Shiitake



533-3200 Peat



533-5749 Black Onyx



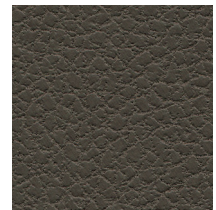
533-5360 Hazey



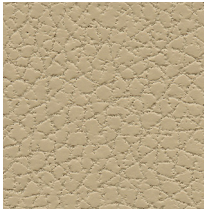
533-4488 Olive



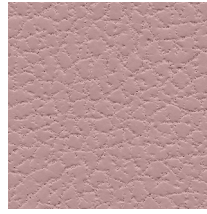
533-3023 Coffee Bean



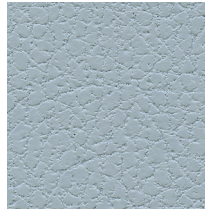
533-3913 Truffle



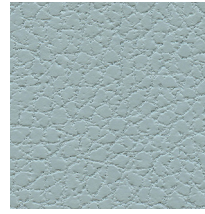
533-3864 Desert Clay



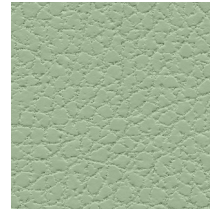
533-6596 Ice Pink



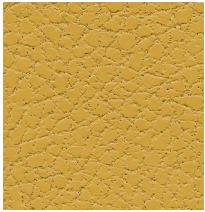
533-3272 Iceberg



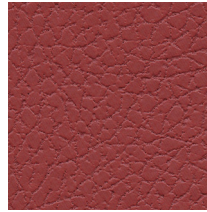
533-2698 Sterling Blue



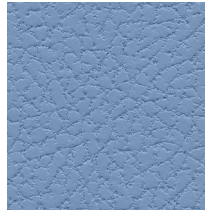
533-4345 Honeydew



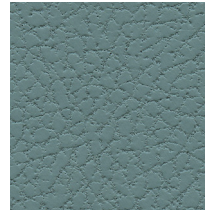
533-8269 Yukon Gold



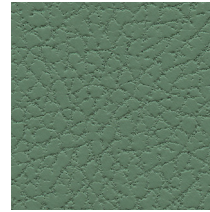
533-1383 Pompeiian Red



533-2793 Harbor Mist



533-2697 Mineral



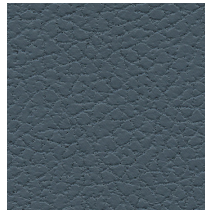
533-4361 Lambs Ear



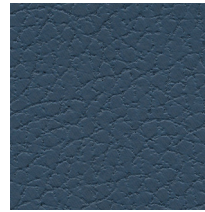
533-8202 Koi



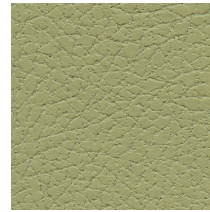
533-1344 Rose Red



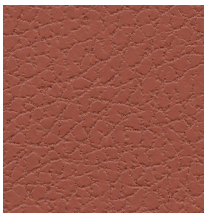
533-2645 Cambridge Blue



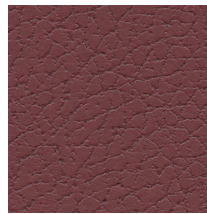
533-2621 Blue Sea



533-4510 Celery



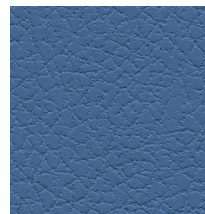
533-8245 Cinnabar



533-1361 Beet Root



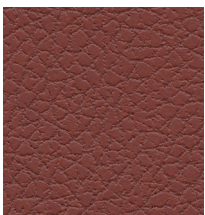
533-2694 Night Navy



533-2794 Rising Tide



533-4487 Sage



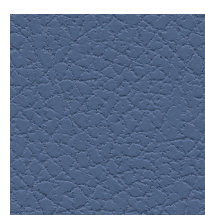
533-1373 Salsa



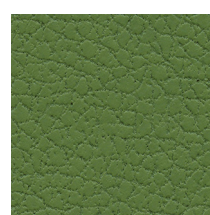
533-9400 Cabernet



533-2620 Evening Blue



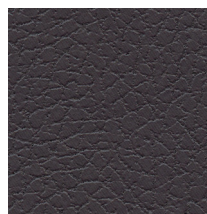
533-2696 Skyway



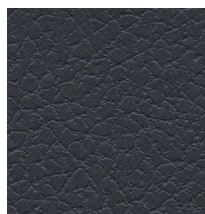
533-4448 Apple Green



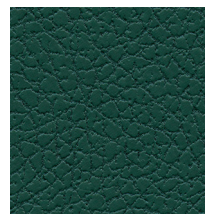
533-3825 Canyon



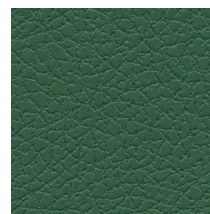
533-9378 Abyss



533-2683 Indigo



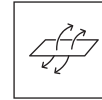
533-4303 Seaweed



533-4302 Esmeralda



Acoustics*



Breathable
Comfort



Responsible
Innovation

Brisa from Ultrafabrics

Applications

Interior Upholstery

General Specifications

Composition:

100% Polycarbonate Polyurethane Surface
65% Recycled Polyester, 35% Rayon Backing

Weight:

Approx. 8.9 oz. Per Square Yard
Approx. 300 Grams Per Square Metre

Thickness:

Approx. 0.95 Millimetres

Width:

54 Inches / 137 Centimetres

Repeat:

None

Performance

Abrasion:

ASTM D4157 / 300,000 Double Rubs (Wyzenbeek)*
BS EN ISO 12947-2 / 160,000 Rubs (Martindale)*
*meets or exceeds

Hydrolysis:

16 Weeks
ASTM D3690 Sect. 6.11 (Hydrolytic Stability)
ISO 1419 Method C (Accelerated Ageing)

Adhesion of Coating: ASTM D751

Tear Strength: ASTM D2261

Breaking Strength: ASTM D751

Tensile Strength: BS EN ISO 1421

Air Permeability: ASTM D737

Sound Absorption: ASTM C423

Colorfastness

Light: AATCC 16.3, 200 Hours, Grade 4
ISO 105 B02, Grade 6

Crocking: AATCC 8, Grade 4-5 Wet & Dry

Flammability Requirements

- ASTM E84 (Adhered) - Class A
- CA TB 117-2013 - Pass
- FMVSS 302 - Pass
- NFPA 260 - Class 1
- UFAC - Class 1

These fabrics, when treated and/or used with other compatible furniture components, have been shown to perform under the fire test conditions of:

- ASTM E84 (Unadhered)
- IMO FTPC Part 8
- BS EN 1021 Parts 1 & 2
- BS 5852 Source 0, 1 & 5 (Cig, Match & Crib 5)

For more information on certifications and standards, sustainability, as well as cleaning and care instructions, please visit our website.

* Only in North America



ultrafabricsinc.com

Ultrafabrics® and logo, and Brisa® are registered trademarks of Ultrafabrics Inc. Made in Japan.

