

# **GEO.SHEARD** FABRICS



Performance with Style



## **TECTONIC**

Open Line

---

## **ROUILLARD**



# GEO. SHEARD FABRICS







Performance with Style

TECTONIC

## SPECIFICATIONS

Style	60423
Contents	60% REPREVE® Post Consumer Rec. Polyester 40% Polyester
Weight	8 oz./lin.yd.
Width	54"
Backing	Nvirosoft™ Eco-friendly backing
Finish	GreenShield® Stain Repellent

## PERFORMANCE

 Abrasion Resistance ASTM D4157	100,000+ Double Rubs
 Pilling Resistance ASTM D3511	Class 5
Seam Slippage ASTM D4034	Warp: 80 lbs Fill: 79 lbs
Breaking Force ASTM D5034-09	Warp: 149 lbs Fill: 133 lbs
 Colorfastness to Light AATCC 16.3	L5 Min. 40 hours
 Colorfastness to Crocking AATCC 8	Class 5 - dry Class 5 - wet
 State of California Technical Bulletin 117: June 2013	Pass
 Fabrics are resistant to bleach, peroxide and dis- infectant based cleaners	Cleanable with a 10% Bleach solution

## SUSTAINABILITY

### This fabric contains post-consumer recycled polyester



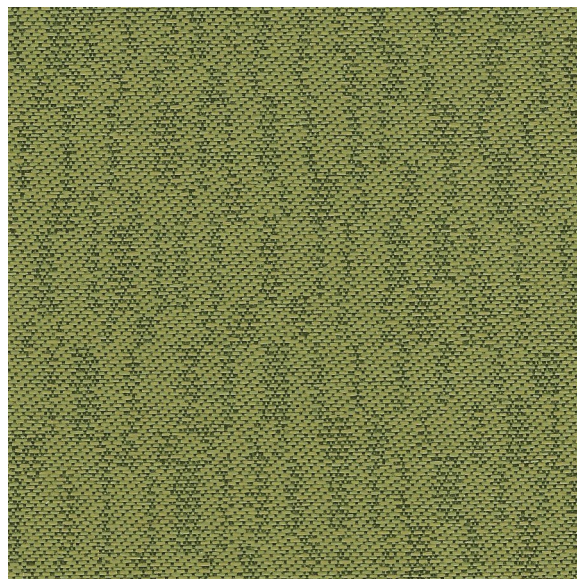
The Greenleaf logo is a trademark of Geo. Sheard Fabrics and designates fabrics containing post-consumer recycled polyester made from recycled plastic bottles which are diverted from landfills.

REPREVE® is the leading brand of recycled performance yarns and contains plastic derived from bottles.

Nvirosoft™ is an environment-friendly acrylic backing which is free of all Prop 65 chemicals at the source. It combines high performance with a soft and supple finish for comfort and ease of upholstery.

GreenShield® is a stain repellent recognized for its environmental properties. It contains no PFOA and PFOS and is Prop 65 compliant. It provides excellent oil and water repellency while reducing the impact on the environment.

TE508 Fern



ESSENTIALS GREEN



# GEO.SHEARD FABRICS

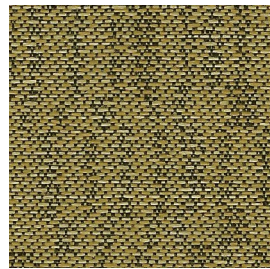


Performance with Style

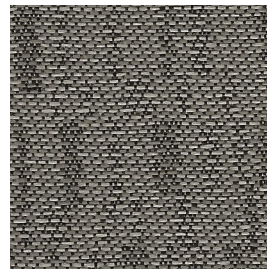
## TECTONIC



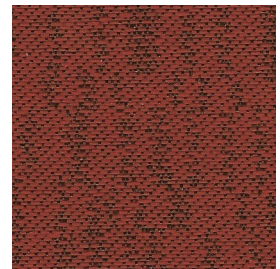
TE508 Fern



TE201 Manila



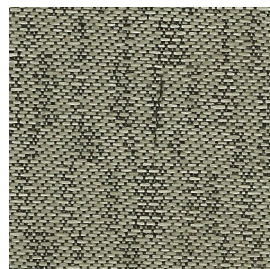
TE803 Rock



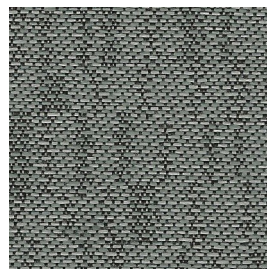
TE702 Carrot



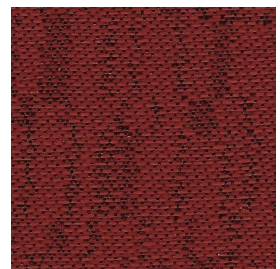
TE507 Shamrock



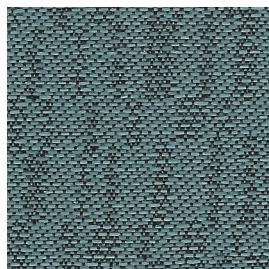
TE103 Bone



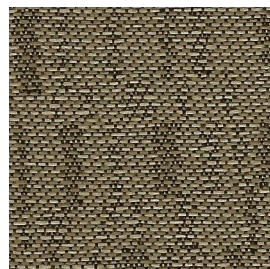
TE806 Cobblestone



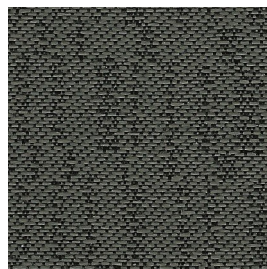
TE704 Brazen



TE403 Iris



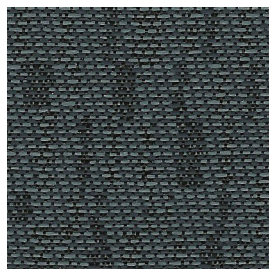
TE104 Grove



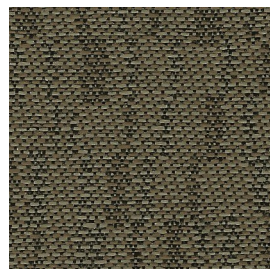
TE807 Stonybrook



TE303 Porsche



TE402 Phthalo



TE703 Hazelnut



TE902 Night

### NOTE

Colors as they appear on this specification sheet may be slightly different than the actual fabrics. Please request fabric samples to obtain a more accurate rendition of colors.