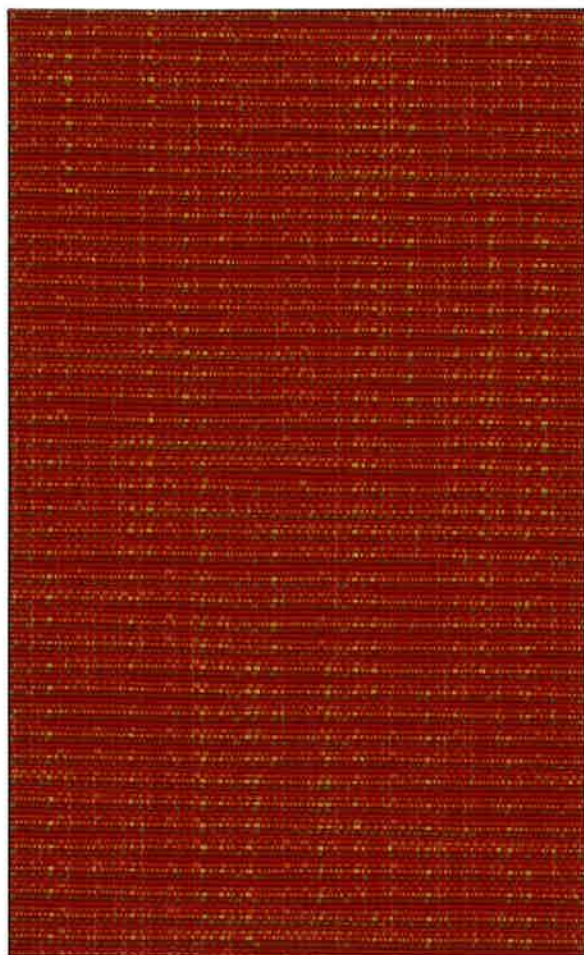
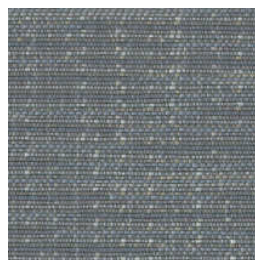


Stitch 4737



Madras
1092



Bespoke
1090



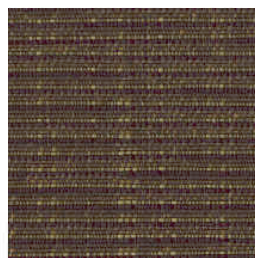
Topcoat
1098



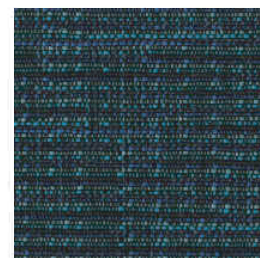
Tartan
1093



Tuxedo
1099



Moccasin
1095



Denim
1096

Stitch 4737

Specifications

Content	15% post-consumer recycled polyester 27% pre-consumer recycled polyester 58% polyester
Weight	9.7 ± 1.0 oz./lin. yd.
Width	54" min. useable
Repeat	11.1" vertical 14.3" horizontal
Backing	acrylic backcoating
Treatment	stain repellent

Cleaning Code

Standard Care Label W-S. Clean with water based cleaning agents, foam or pure, water free solvents. Vacuuming or light brushing is recommended to prevent dust and soil buildup.

Miscellaneous

Proudly woven in North America supporting our local communities.

Application testing of this product is recommended. Colors may vary between dye lots. This is a directional fabric.

Visit guilfordofmaine.com for samples.

Performance



Colorfastness to Light (AATCC 16.3 Option 3)
Grade 4 min. at 40 hours



Colorfastness to Crocking (AATCC 8)
Grade 4 min. dry & Grade 3 min. wet



Breaking Strength (ASTM D5034)
135 lbf warp and 235 lbf fill

Seam Slippage (ASTM D4034)
90 lbf warp and 70 lbf fill

Pilling Resistance (ASTM D3511)
Class 4



Flammability
**CA Technical Bulletin 117-2013 Section 1
NFPA 260/UFAC Fabric Classification - Class I**



Abrasion (ASTM D4157)
70,000 double rubs cotton duck

Sustainability



*Certification Marks owned by the Association for Contract Textiles, Inc.