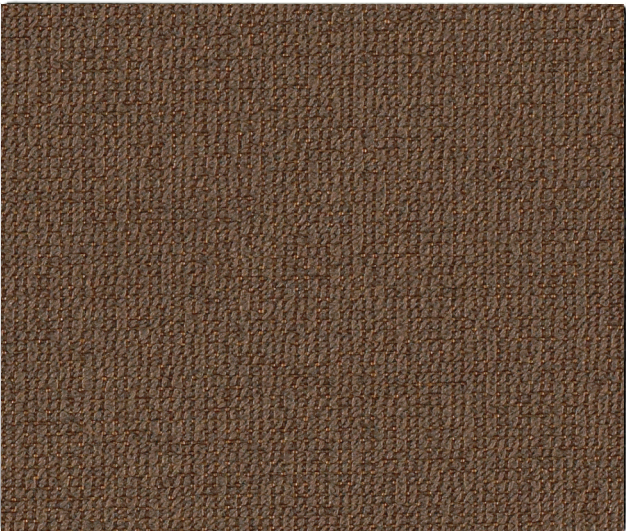


SOLACE

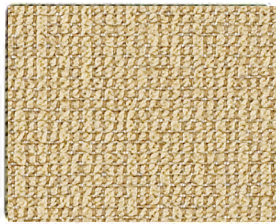
Reduced Environmental Impact



09127039 CINDER



09127105 IVORY



09126984 ALMOND



09127182 PEWTER



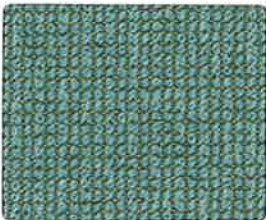
09127083 GILDED



09127204 PEAR



09127072 FOSSIL



09127127 MAUI



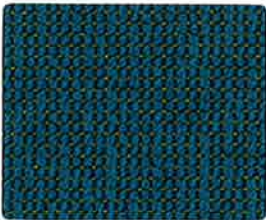
09127006 BLAZE



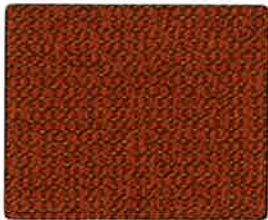
09127028 CELADON



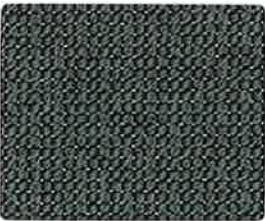
09127050 EARTH



09126995 AZUL



09127160 PAPRIKA



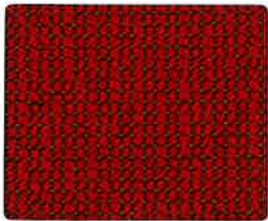
09127149 NICKEL



09127193 ROASTED



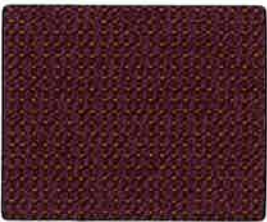
09127094 INDIGO



09127017 CARMINE



09127138 MINERAL



09127171 PEONY
























09127116 LAPIS



09127061 EBONY

# SOLACE

08126984		ALMOND	08126995		AZUL
08127006		BLAZE	08127017		CARMINE
08127028		CELADON	08127039		CINDER
08127050		EARTH	08127061		EBONY
08127072		FOSSIL	08127083		GILDED
08127094		INDIGO	08127105		IVORY
08127116		LAPIS	08127127		MAUI
08127138		MINERAL	08127149		NICKEL
08127160		PAPRIKA	08127171		PEONY
08127182		PEWTER	08127193		ROASTED
08127204		PEAR			



GREENGUARD Children & Schools Indoor Air Quality Certified. CA Section 01350 compliant.  
Eligible for CHPS Low-Emitting Material Credits.

55" Pattern: SOLACE  
Abrasion: 100,000 D.R.

Fiber Content: 49% Polyester,  
41% Post Industrial Recycled Polyester,  
10% Post Consumer Recycled Polyester

Backing: Acrylic  
Finish: Soil & Stain Resistant  
Flammability: CA Bulletin 117 Sec. E, UFAC Class 1

Lightfastness: 40 Hrs., Class 4 AATCC 16A  
Cleaning Code: WS - Water based cleaning agents or foam.



08993842