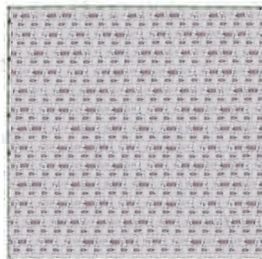
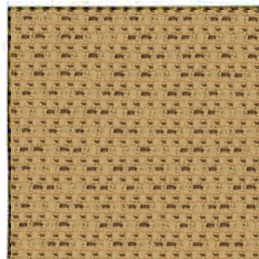


BIODEGRADABLE*

Shift 2179



Zephyr
942



Sauterne
921



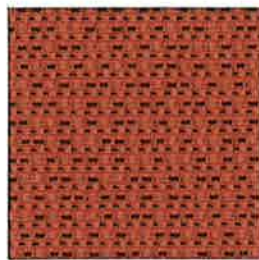
Pastoral
941



Nimbus
925



Vapor
943



Blushing
922



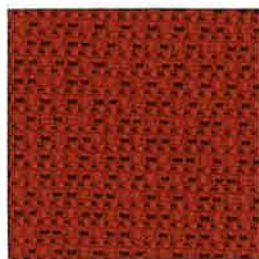
Fjord
940



Steel
938



Pebbles
944



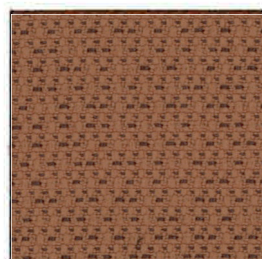
Fireclay
923



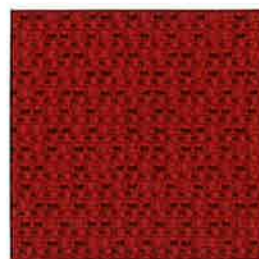
Bluenote
939



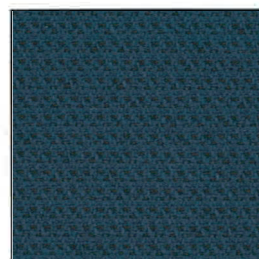
Umbral
937



Sienna
945



Ladybug
946



Midnight
924



Anthracite
926

Shift 2179

Specifications

Content	100% post-consumer recycled biodegradable* polyester
Weight	12.3 ± 1.0 oz./lin. yd
Width	54" min. useable
Repeat	none
Backing	biodegradable* acrylic backcoating
Treatment	none

Cleaning Code

Standard Care Label W-S. Clean with water based cleaning agents, foam or pure, water free solvents. Vacuuming or light brushing is recommended to prevent dust and soil buildup. May also be disinfected with hydrogen peroxide, alcohol, and quaternary ammonium (quat) based cleaners..

Miscellaneous

- Application testing of this product is recommended.
- Colors may vary between dye lots.
- This is a directional fabric.

Proudly woven in North America supporting our local communities.


Sustainability


BIODEGRADABLE* CLEAN IMPACT TEXTILES® address the daunting problem of how to deal with polyester fabric at the end of its useful life.

Biodegradable* in landfill after 1,278 days (tested under ASTM D5511)

*Rate and extent of biodegradation into elements found in nature is 91% after 1,278 days under ASTM D5511 (Anaerobic Biodegradation of Plastic Materials Under High Solids Anaerobic Digestion Conditions). The test was done with the same component (PET) polyester and biocatalyst additive. No evidence of further degradation.

Performance


 Colorfastness to light (AATCC 16.3 Option 3)
Grade 4.5 min. at 40 hours

 Colorfastness to crocking (AATCC 8)
Grade 4 min. dry & Grade 4.5 min. wet

Breaking Strength (ASTM D5034)
245 lbf min. warp and 294 lbf min. fill

 Seam Slippage (ASTM D4034)
100 lbf min. warp and 108 lbf min. fill

Pilling Resistance (ASTM D3511)
Class 4 min.

 Flammability
CA Technical Bulletin 117-2013 Section 1
NFPA 260-2013 Class I

* Abrasion (ASTM D4157)
100,000 double rubs min. cotton duck

*Multiple factors affect fabric durability and appearance retention, including end-user application and proper maintenance. Wyzenbeak results above 100,000 double rubs have not been shown to be an indicator of increased lifespan.

Certification Marks owned by the Association for Contract Textiles, Inc.