

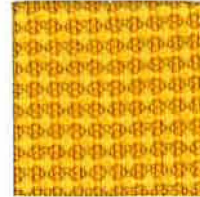
Quadrille 4701



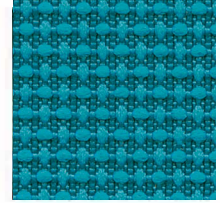
Regalia
1005



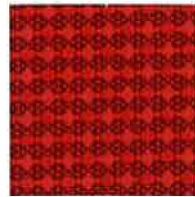
Fiesta
1008



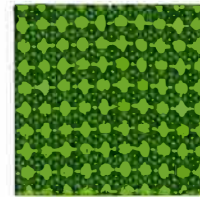
Zest
1007



Escapade
1016



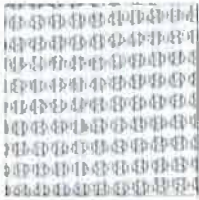
Carnival
1009



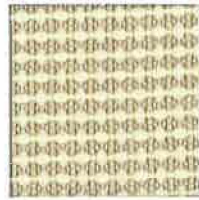
Spring
1006



Revelry
1015



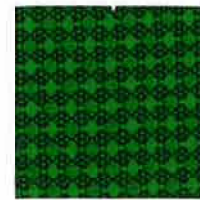
Cabaret
1002



Fair
1001



Spree
1010



Shenanigan
1017



Soiree
1014



Gambol
1003



Leisure
1004



Jubilee
1011



Opus
1012



Masquerade
1013

Quadrille 4701

Specifications

Content	47% pre-consumer recycled polyester 53% polyester
Weight	12.1 ± 1.0 oz./lin. yd.
Width	54" min. useable
Repeat	none
Backing	none
Treatment	none

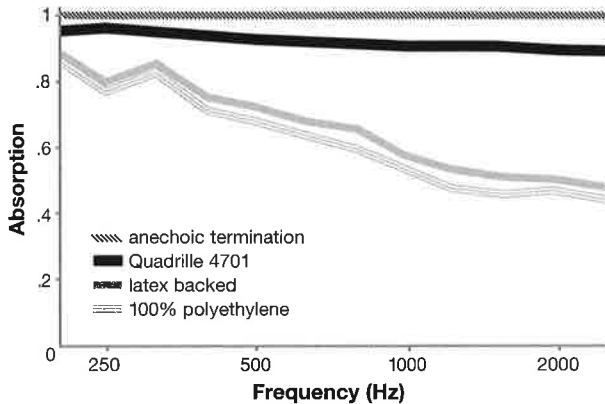
Cleaning Code

Standard Care Label W-S. Clean with water based cleaning agents, foam or pure, water free solvents. Vacuuming or light brushing is recommended to prevent dust and soil buildup.

Acoustical Performance






The plot below summarizes impedance tube measurements of absorption of anechoic termination and various fabrics in front of the anechoic termination.

Acoustical Performance for Panel Applications
 (ISO 10534-2)



NRC of anechoic termination **1.00**
 NRC of fabric in front of anechoic termination **.90**

Performance

-  Colorfastness to Light (AATCC 16.3 Option 3)
Grade 4 min. at 40 hours
-  Colorfastness to Crocking (AATCC 8)
Grade 4 min. dry & Grade 3 min. wet
-  Breaking Strength (ASTM D5034)
245 lbf warp and 270 lbf fill
- Seam Slippage (ASTM D4034)
70 lbf warp and 90 lbf fill
- Pilling Resistance (ASTM D3511)
Class 4
-  Flammability
**CA Technical Bulletin 117-2013 Section 1
 NFPA 260/U FAC Fabric Classification - Class I
 ASTM E84 Class I or A**
-  Abrasion (ASTM D4157)
100,000 double rubs cotton duck


Sustainability



Miscellaneous

Proudly woven in North America supporting our local communities.
 Application testing of this product is recommended.
 Colors may vary between dye lots. This is a directional fabric.

Visit guilfordofmaine.com for samples.

 This pattern is included in the underwriters laboratory panel fabric recognition program. Additional testing of this U.L. recognized component fabric is not required on approved panels from participating manufacturers.

*Certification Marks owned by the Association for Contract Textiles, Inc.