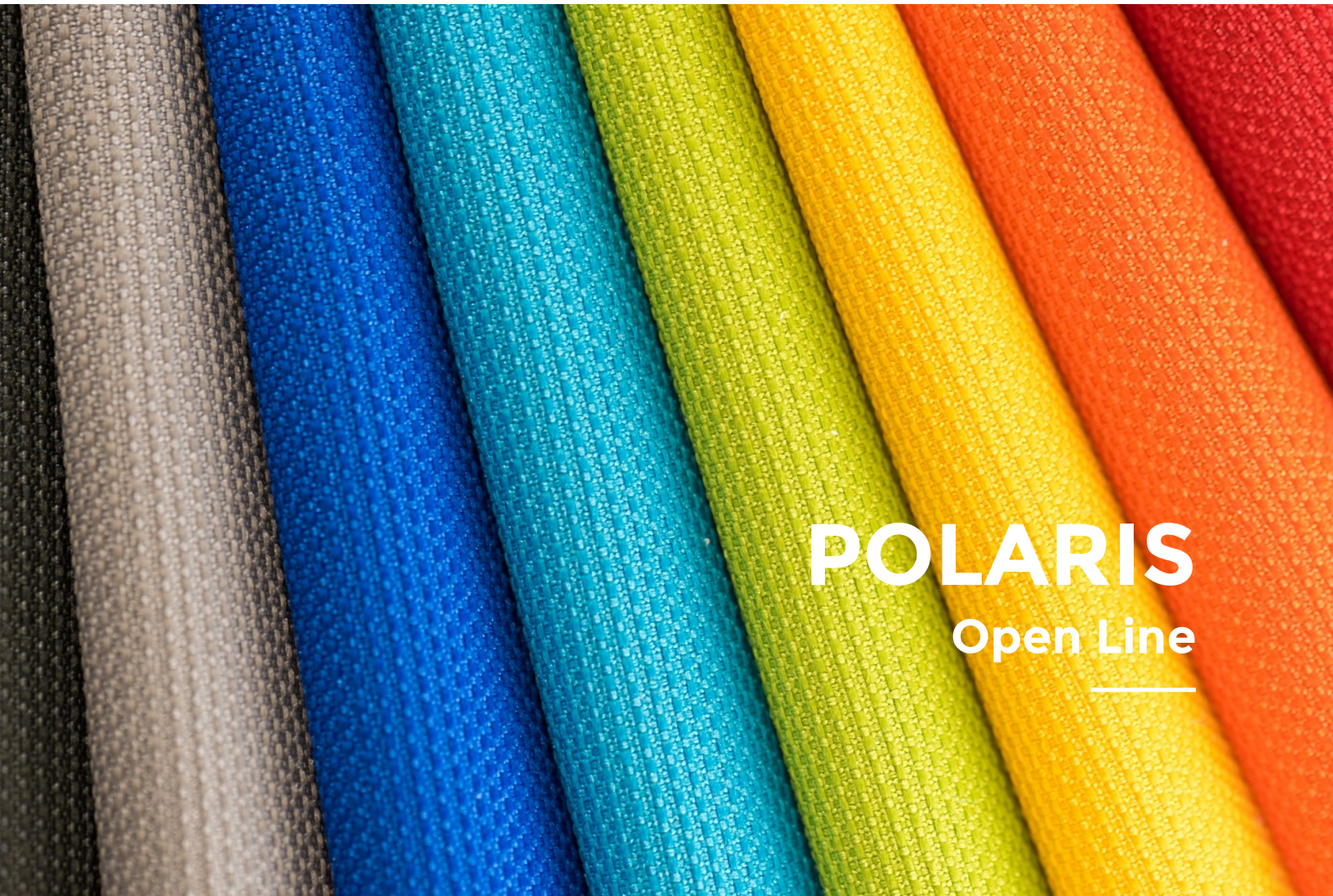


GEO.SHEARD FABRICS



Performance with Style



POLARIS
Open Line



ROUILLARD

GEO. SHEARD FABRICS








Performance with Style

POLARIS

SPECIFICATIONS

Style	51854
Contents	55% REPREVE® Our Ocean™ Post Consumer Recycled Polyester 45% REPREVE® Post Consumer Recycled Polyester
Weight	13 oz./lin.yd.
Width	54"
Backing	Nvirosoft™ Eco-friendly backing
Finish	GreenShield® Stain Repellent
Cleaning Code	WS

PERFORMANCE

 Abrasion Resistance ASTM D4157	100,000+ Double Rubs
 Pilling Resistance ASTM D3511	Class 5
Seam Slippage ASTM D4034	Warp: 83 lbs Fill: 53 lbs
Breaking Force ASTM D5034-09	Warp: 316 lbs Fill: 249 lbs
 Colorfastness to Light AATCC 16.3	L4-5 Min. 40 hours
 Colorfastness to Crocking AATCC 8	Class 4.5 - dry Class 5 - wet
 State of California Technical Bulletin 117: June 2013	Pass

SUSTAINABILITY

This fabric contains post-consumer recycled polyester



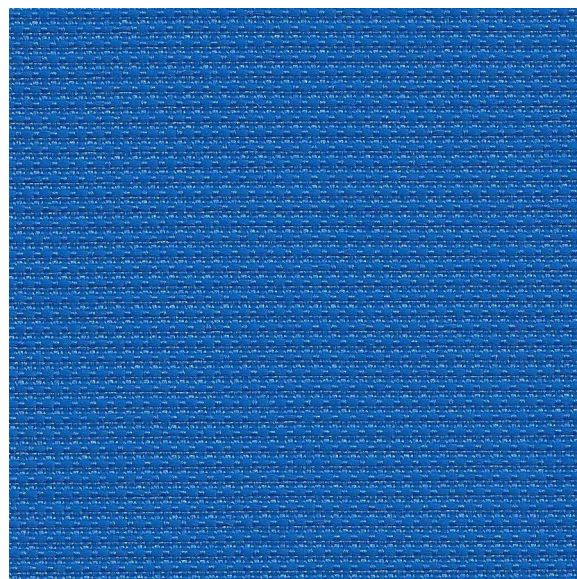
The Greenleaf logo is a trademark of Geo. Sheard Fabrics and designates fabrics containing post-consumer recycled polyester made from recycled plastic bottles which are diverted from landfills.

REPREVE® Our Ocean™ is the leading brand of recycled performance yarns and contains plastic derived from bottles collected within 50 kilometers of coastlines in countries that lack formal waste or recycling systems.

Nvirosoft™ is an environment-friendly acrylic backing which is free of all Prop 65 chemicals at the source. It combines high performance with a soft and supple finish for comfort and ease of upholstery.

GreenShield® is a stain repellent recognized for its environmental properties. It contains no PFOA and PFOS and is Prop 65 compliant. It provides excellent oil and water repellency while reducing the impact on the environment.

PS401 Corfu



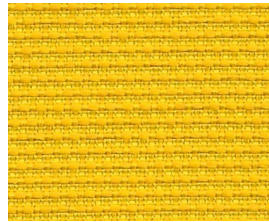
COLORSPEC® CLASSICS

GEO.SHEARD FABRICS

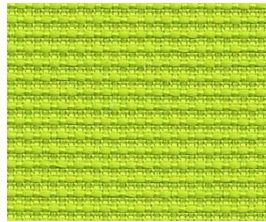


Performance with Style

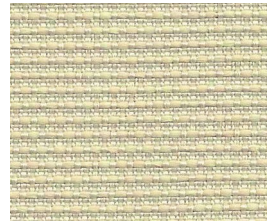
POLARIS



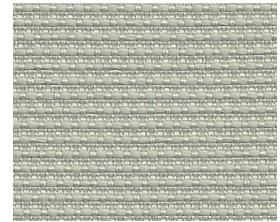
PS203 Banana



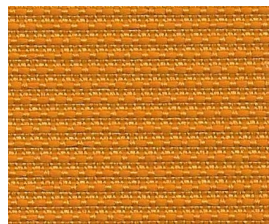
PS502 Neon



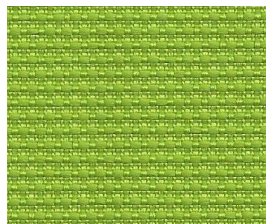
PS102 Angora



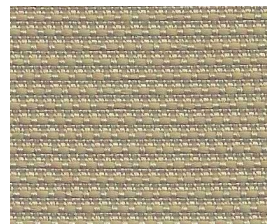
PS801 Nickel



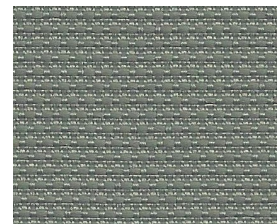
PS705 Sunset



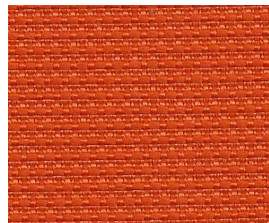
PS503 Glade



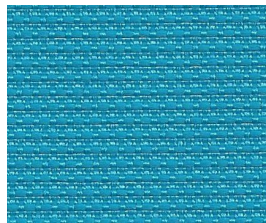
PS101 Hemp



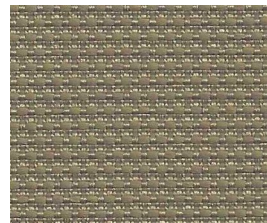
PS802 Steel



PS702 Tangerine



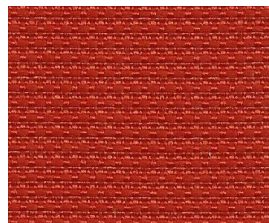
PS404 Aegean



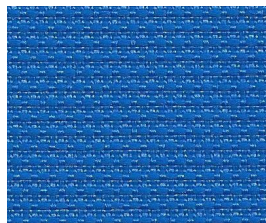
PS103 Wicker



PS804 Zircon



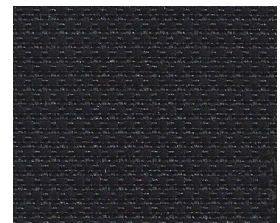
PS706 Chili



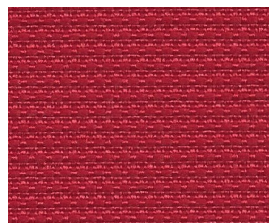
PS401 Corfu



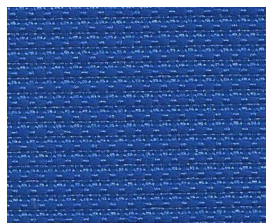
PS703 Chocolate



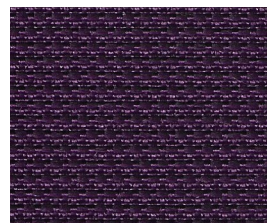
PS901 Jet



PS302 Fire



PS408 Sapphire



PS601 Aubergine

NOTE

Colors as they appear on this specification sheet may be slightly different than the actual fabrics. Please request fabric samples to obtain a more accurate rendition of colors.