

Name

Percept

Designer

Suzanne Tick

Style No.

4040

Use

Upholstery
Wrapped Wall
Panel

Content

81% Recycled
Polyester +
19% Polyester

Abrasion

Wyzenbeek
95,000 double rubs

Environmental

PFOA/PFOS Free
Stain Repellent
Recycled Content



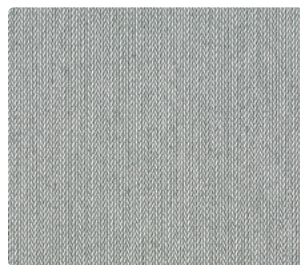
Placid 4040-26



Constant 4040-23



Schema 4040-07



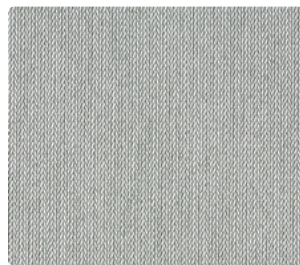
Pristine 4040-01



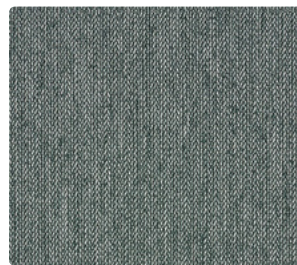
Render 4040-21



Intrinsic 4040-06



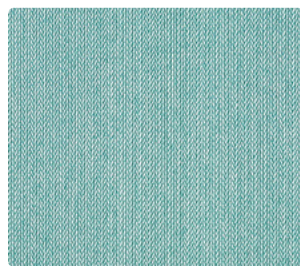
Sublime 4040-02



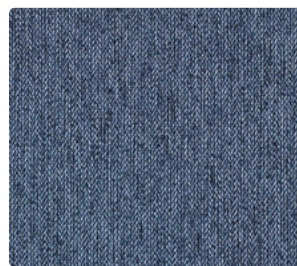
Context 4040-03



Essence 4040-04



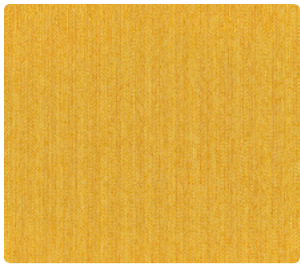
Tenet 4040-11



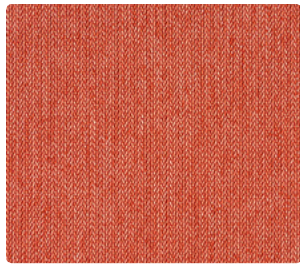
Nebula 4040-15



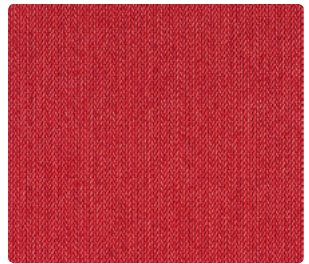
Transmit 4040-20



Radiant 4040-24



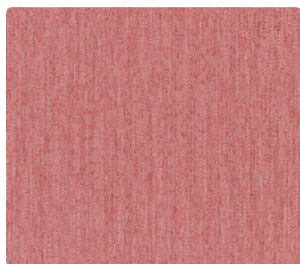
Verve 4040-19



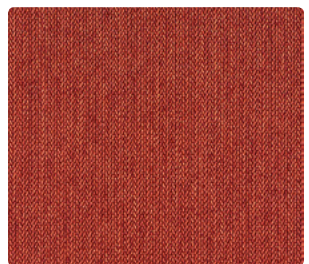
Cardinality 4040-17



Epiphany 4040-08



Pulse 4040-22



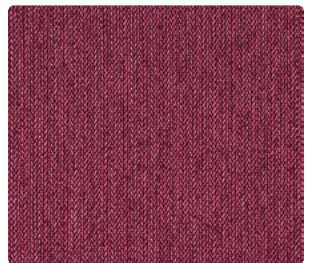
Ignite 4040-18



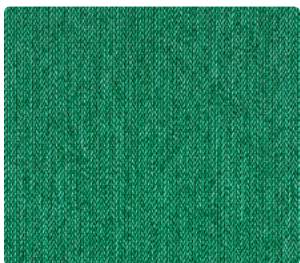
Reason 4040-09



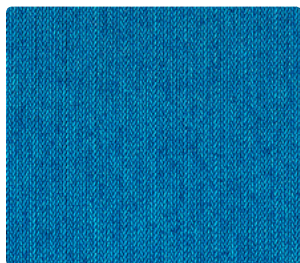
Fringe 4040-28



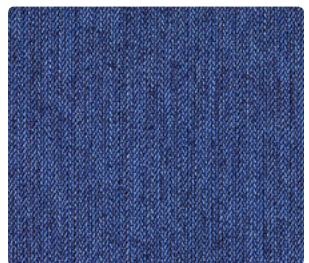
Devotion 4040-16



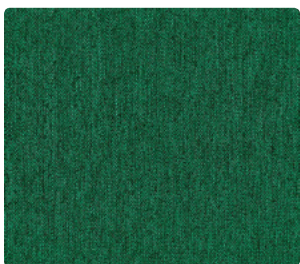
Jubilant 4040-10



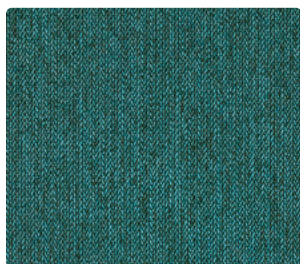
Amplitude 4040-13



Harmonic 4040-14



Propagate 4040-25



Peak 4040-12



Singular 4040-27



Percept by Luum

This versatile recolor of a classic multi-purpose fabric now offers an extended palette of 27 colors. Sophisticated as a vertical fabric, its heavier weight and elegant textural surface make Percept perfectly suited for upholstery use. The developed palette includes essential colors, ranging from light to bright to deep. Combining the existing technical brights with a warm neutral, vibrant greens and a subtle pink creates a rich and bold palette. Percept is a true multi-purpose fabric designed for use as upholstery, panel and wrapped wall.

Name **Percept**

Style No. **4040**

Designer Suzanne Tick

Specification Use: Upholstery/Wrapped Wall/Panel
Content: 81% Recycled Polyester (Postconsumer) + 19% Polyester
Weight: 18.5 ± 0.5 oz per linear yard
Width: 54"
Pattern Repeat: None
Directional: Yes

Finish Stain Repellent

Performance Abrasion: ASTM D4157 Wyzenbeek 95,000 double rubs
Breaking Strength: ASTM D5034 Warp 404 lbf, Fill 372 lbf
Seam Slippage: ASTM D4034 Warp 159 lbf, Fill 179 lbf
Colorfastness to Light: AATCC 16, Grade 4 at 40 Hours
Colorfastness to Crocking: AATCC 8, Wet Class 4, Dry Class 4
Pilling: ASTM D3511 (Brush Pill) Class 5

Acoustical Rating Fabric Transparency 0.85, NRC 0.75 tested to ISO 10534-2 standards

Flame Retardancy Cal TB 117-2013
ASTM E84 Unadhered Class A or 1

Maintenance WS, Clean with either a water-based or solvent-based cleaning agent.

Environmental PFOA/PFOS Free Stain Repellent
Recycled Content

Origin USA

Dye lots may vary slightly from samples shown. Samples shown off the bolt.



Canada
877.705.LUUM
luumtextiles.ca

USA
877.705.LUUM
luumtextiles.com

International
919.464.2922
luumtextiles.com

cdn/us/int/01-19

© Luum™ 2019, all rights reserved.

*™ Trademarks used under license by Luum™, Percept™

*Certification Marks owned by the Association for Contract Textiles, Inc.

U2-A2-P2-SC-305-4040