

Palette 2155



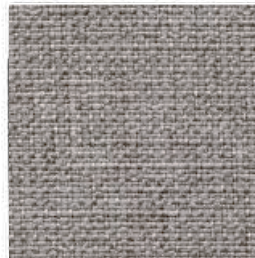
Acorn
1137



Cutch
1135



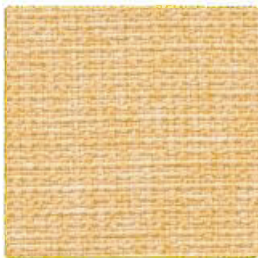
Chamomile
1131



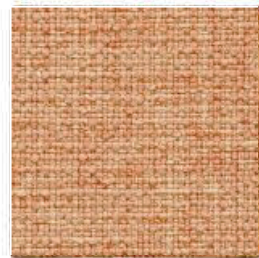
Alder
1136



Artichoke
1145



Sunflower
1144



Sandalwood
1143



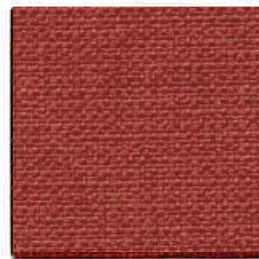
Annatto
1142



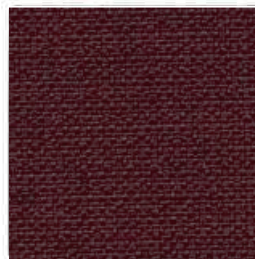
Sorrel
1146



Paprika
1141



Sumac
1140



Murex
1139



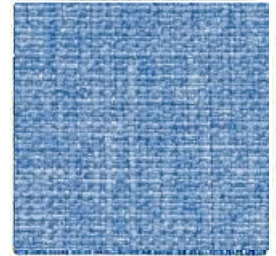
Walnut
1138



Birch Bark
1133



Alkanet
1132



Cornflower
1151



Lichen
1149



Saxon Blue
1150



Spinach
1147



Nettle
1148



Indigo
1152



Knotweed
1153



Iron
1134



Logwood
1154

Palette 2155

Specifications

Content	100% polyester
Weight	12+/-1 oz per linear yard
Width	54" min. useable
Repeat	none

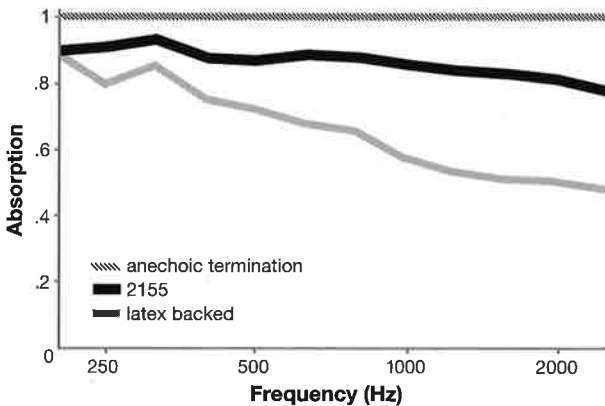
Cleaning Code

Standard Care Label W-S. Clean with water based cleaning agents, foam or pure, water free solvents. Vacuuming or light brushing is recommended to prevent dust and soil buildup. May also be disinfected with hydrogen peroxide, alcohol, and quaternary ammonium (quat) based cleaners.

Acoustical Performance


The plot below summarizes impedance tube measurements of absorption of an anechoic termination and various fabrics in front of the anechoic termination.


Acoustical Performance for Panel Applications
 (ISO 10534-2)




NRC of anechoic termination **1.00**
 NRC of fabric in front of anechoic termination **.90**

Performance


-  Colorfastness to Light (AATCC 16.3 Option 3)
Grade 4 min. at 40 hours


-  Colorfastness to Crocking (AATCC 8)
Grade 4 min. dry & Grade 3 min. wet

-  Breaking Strength (ASTM D5034)
295 lbf min. warp and 280 lbf fill

- Seam Slippage (ASTM D4034)
85 lbf min. warp and 75 lbf fill

- Pilling Resistance (ASTM D3511)
Class 4 min.

-  Flammability (ASTM E84)
Class I or A

-  Abrasion (ASTM D4157)
100,000 double rubs min. cotton duck

Sustainability



Miscellaneous

Proudly made in North America supporting our local communities.

Application testing of this product is recommended.
 Colors may vary between dye lots.

Visit guilfordofmaine.com for samples.



This pattern is included in the underwriters laboratory panel fabric recognition program. Additional testing of this UL-recognized component fabric is not required on approved panels from participating manufacturers.

*Multiple factors affect fabric durability and appearance retention, including end-user application and proper maintenance. Wyzenbeak results above 100,000 double rubs have not been shown to be an indicator of increased lifespan.

Certification Marks owned by the Association for Contract Textiles, Inc.