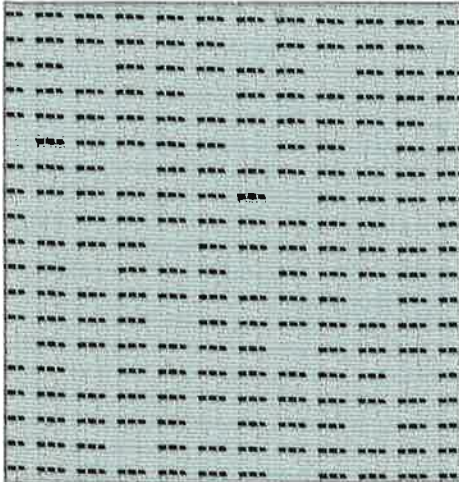


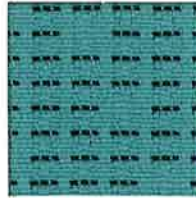
BLEACH CLEANABLE

UPHOLSTERY

Input 5598



Cloud
1471



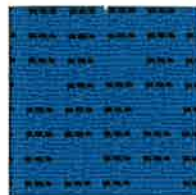
Tiffany
1480



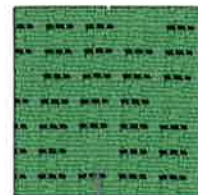
Lime
1477



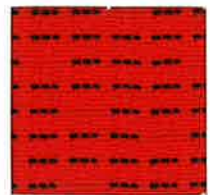
Squash
1488



Sky
1481



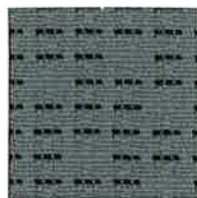
Mint
1479



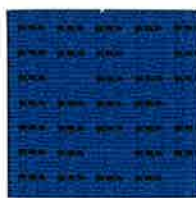
Flame
1487



Bisque
1476



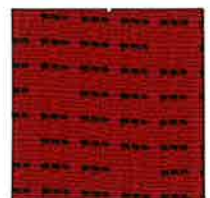
Dove
1472



Delft
1482



Pine
1478



Crimson
1486



Fossil
1475



Coal
1473



Midnight
1483



Orchid
1484



Raisin
1485



Jet
1474

Input 5598

Specifications

Content	94% post-consumer recycled polyester 6% pre-consumer recycled polyester
Weight	11.1 ± 1.0 oz./lin. yd.
Width	54" min. useable
Repeat	2.5" vertical 12.25" horizontal
Backing	none
Treatment	none

Cleaning Code

Standard Care Label W-S. Clean with water based cleaning agents, foam or pure, water free solvents. Vacuuming or light brushing is recommended to prevent dust and soil buildup.

May be cleaned with a 10% bleach-to-water solution. Rinse well after cleaning.

Miscellaneous

Proudly woven in North America supporting our local communities.

Application testing of this product is recommended. Colors may vary between dye lots. This is a directional fabric.

Visit guilfordofmaine.com for samples.

Performance



Colorfastness to Light (AATCC 16.3 Option 3)
Grade 4 min. at 40 hours



Colorfastness to Crocking (AATCC 8)
Grade 4 min. dry & Grade 3 min. wet



Breaking Strength (ASTM D5034)
290 lbf warp and 250 lbf fill

Seam Slippage (ASTM D4034)
110 lbf warp and 75 lbf fill

Pilling Resistance (ASTM D3511)
Class 4 min.



Flammability
**CA Technical Bulletin 117-2013 Section 1
NFPA 260/UFAC Fabric Classification - Class I**



Abrasion (ASTM D4157)
100,000 double rubs cotton duck

Sustainability



100% recycled and recyclable
Terratex is a registered trademark of Duvaltex



facts[®]
Gold

*Certification Marks owned by the Association for Contract Textiles, Inc.