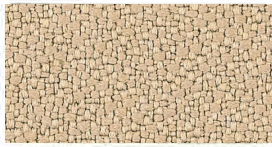
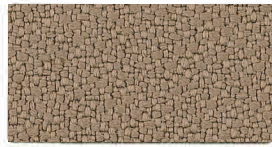


Reduced Environmental Impact

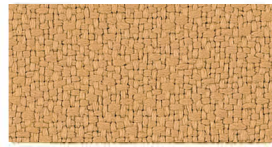
HUE



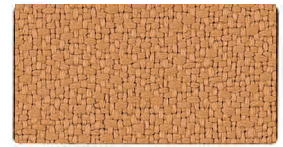
09063404 Dandelion



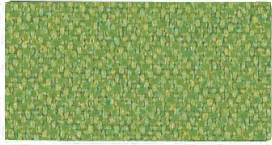
09063437 Frothe



09063448 Golden



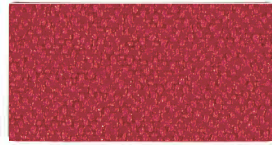
09063558 Saffron



09127831 Stem



09063602 Tropic



09127776 Hibiscus



09063547 Paprika



09063426 Fern



09063580 Sky



09063569 Salsa



09063327 Annatto



09063470 Grass



09063536 Pacific



09063371 Chipotle



09063591 Smoke



09063514 Laurel



09127809 Seaport



09063393 Currant



09127798 Quarry



09063492 Juniper



09063525 Night



09063459 Grape



09063360 Char



09063338 Aspen



09063481 Indigo



09063415 Eggplant



09127820 Shade



09063382 Cocoa




09063503 Latte



09063349 Black

HUE

08063327		Annatto	08063338		Aspen
08063349		Black	08063360		Char
08063371		Chipotle	08063382		Cocoa
08063393		Currant	08063404		Dandelion
08063415		Eggplant	08063426		Fern
08063437		Frothe	08063448		Golden
08063459		Grape	08063470		Grass
08127776		Hibiscus	08063481		Indigo
08063492		Juniper	08063503		Latte
08063514		Laurel	08063525		Night
08063536		Pacific	08063547		Paprika
08127798		Quarry	08063558		Saffron
08063569		Salsa	08127809		Seaport
08127820		Shade	08063580		Sky
08063591		Smoke	08127831		Stem
08063602		Tropic			



GREENGUARD Children & Schools Indoor Air Quality Certified®. CA Section 01350 compliant.
Eligible for CHPS Low-Emitting Material Credits.

54" Pattern: HUE
Durability: 1,000,000 D.R.

Content: 100% Post Industrial Recycled Polyester
Backing: Latex
Finish: Teflon®
Flame Resistance: CA Bulletin 117 Sec E, NFPA 260 Class 1,
ASTM E-84

Lightfastness: 60 Hrs., Class 4.5
Maintenance: WS - Clean with water-based cleaning agents
or foam.

