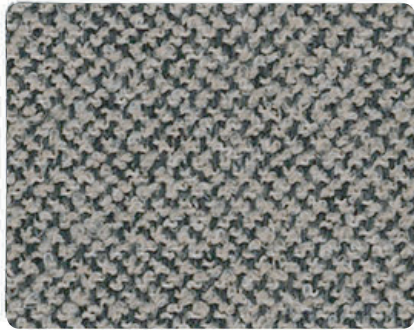


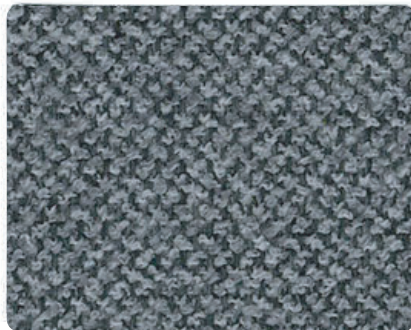


**MOMENTUM**  
TEXTILES & WALLCOVERING

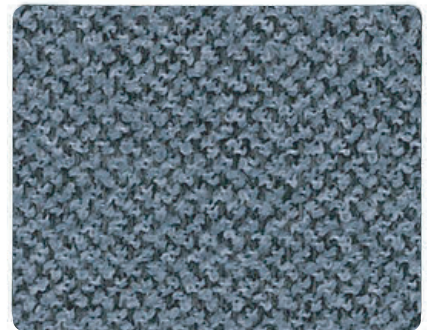
Guru



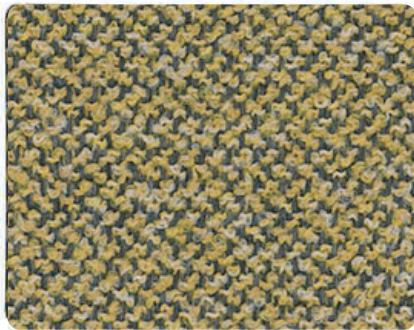
Morel



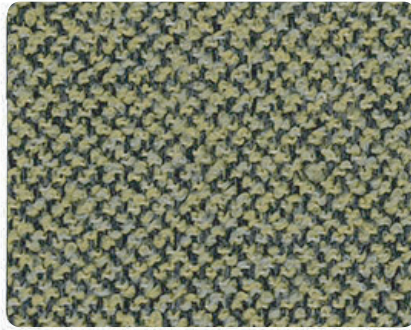
Chalice



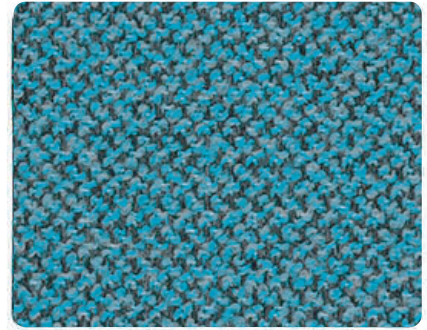
Pewter



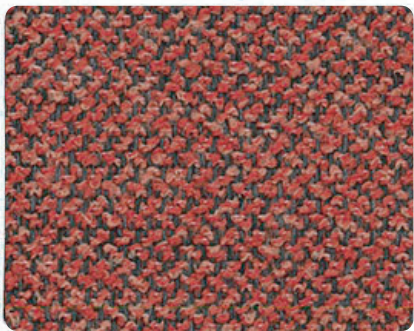
Canary



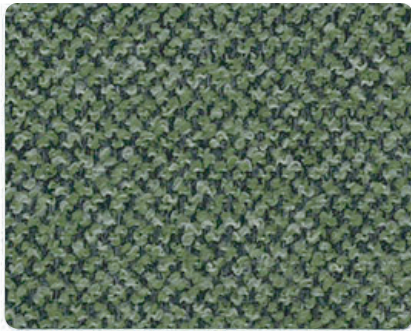
Kiwi



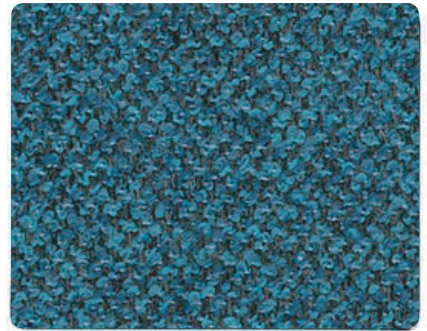
Aqua



Sumac



Hosta



Tahoe



Onyx



Tawny



Nocturne



## Guru

**Application:** Upholstery, Panel

**Content:** 100% Solution Dyed Polypropylene

**Backing:** Acrylic

**Finish:** -

**Flame Resistance:** CA 117 2013, UFAC Class 1, NFPA 260 Class 1; With proper components, compatible with CA 133; ASTM E84

**Durability:** 100,000 double rubs\*

**Maintenance:** WS - Water-based cleaning agents or foam

**Width:** 56"

**Repeat:** -

**Shown Railroaded:** No

**Lightfastness:** Class 5, 40 hours

**Weight:** 1.19 lbs.



©2022

Visit [momentumtextilesandwalls.com](https://momentumtextilesandwalls.com) to view full pattern repeat and complete specs

Multiple factors affect fabric durability and appearance retention, including end-user application and proper maintenance.

\*Abrasion test results exceeding ACT Performance Guidelines are not an indicator of product lifespan.

### REDUCED ENVIRONMENTAL IMPACT:

- GREENGUARD certified
- Meets or exceeds ACT Sustainability Standard NSF/ANSI 336 compliance requirements
- Single source fiber content

